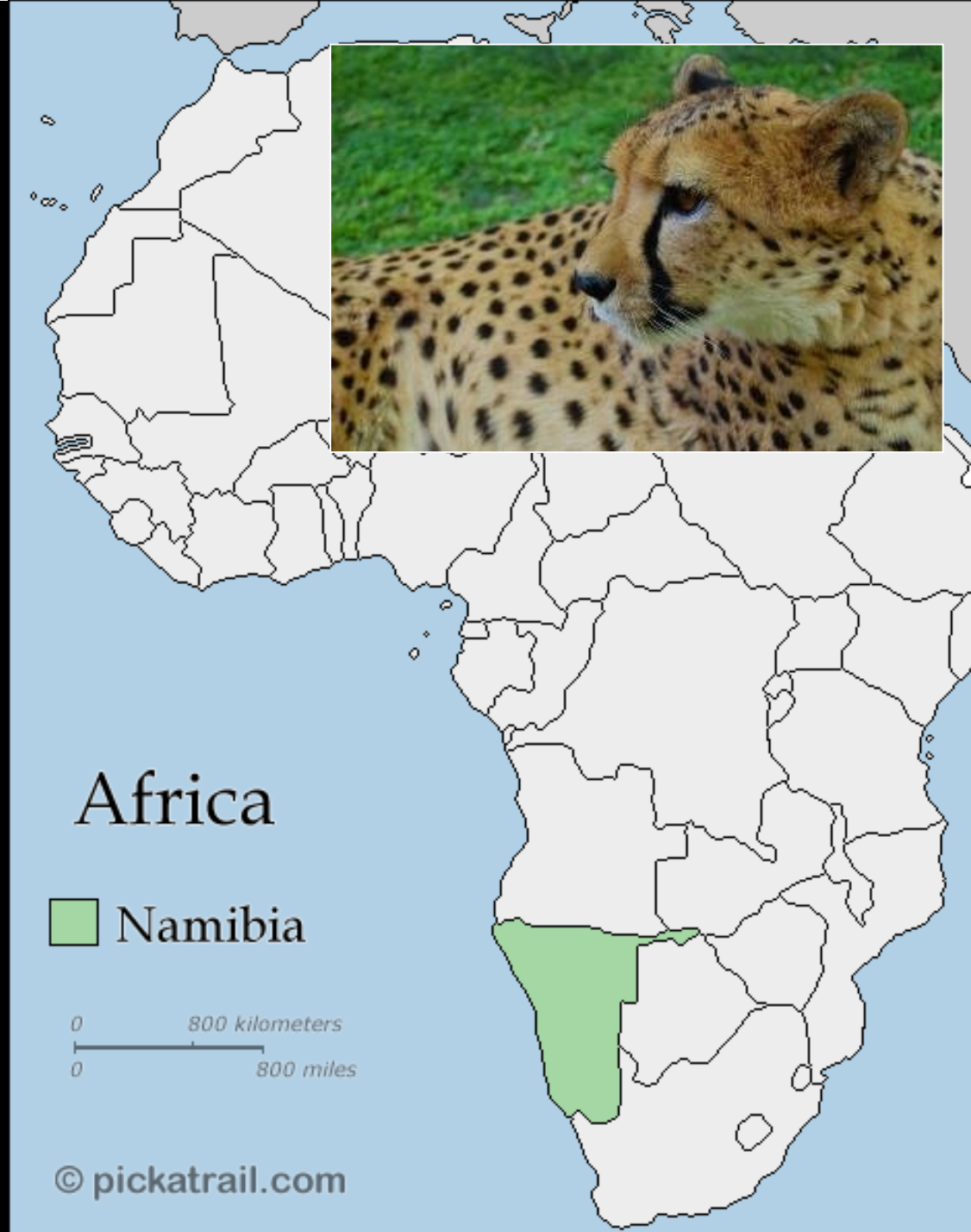


Namibia 2017!

NRES 492:
Wildlife
Conservation in
Namibia

Larkin and Kelly
Powell

May 9–June 2



Why Namibia?

- Peaceful, stable country
- Largest economic disparity on the planet
- Models of conservation are abundant
- Diversity of ecosystems—desert to savannah to thick bush
- Diverse culture: >6 tribal groups and colonialists
- UNL collaborators and our experience in-country
- Impressive scenery!
- Abundant wildlife!

Flight possibilities

- More bang for your buck!
- US to Frankfurt, Germany? Paris, France? Stay tuned!
 - 8-9 hour flights with 9-10 hour layovers to allow more fun!



We will travel!



Windhoek



Chameleon Backpackers Lodge





CAMPING SAFARIS

3 Day Etosha Link departs Saturdays	10 Day Explorer departs Tuesdays	3 Day Sossus Link departs Tuesdays
7 Day Northern departs Fridays	8 Day Delta Falls departs Fridays	7 Day Southern departs Fridays

LODGE SAFARIS

3 Day Etosha Express departs Tuesdays	3 Day Sossusvlei Express departs Fridays	6 Day Dunes & Wildlife departs Tuesdays
--	---	--



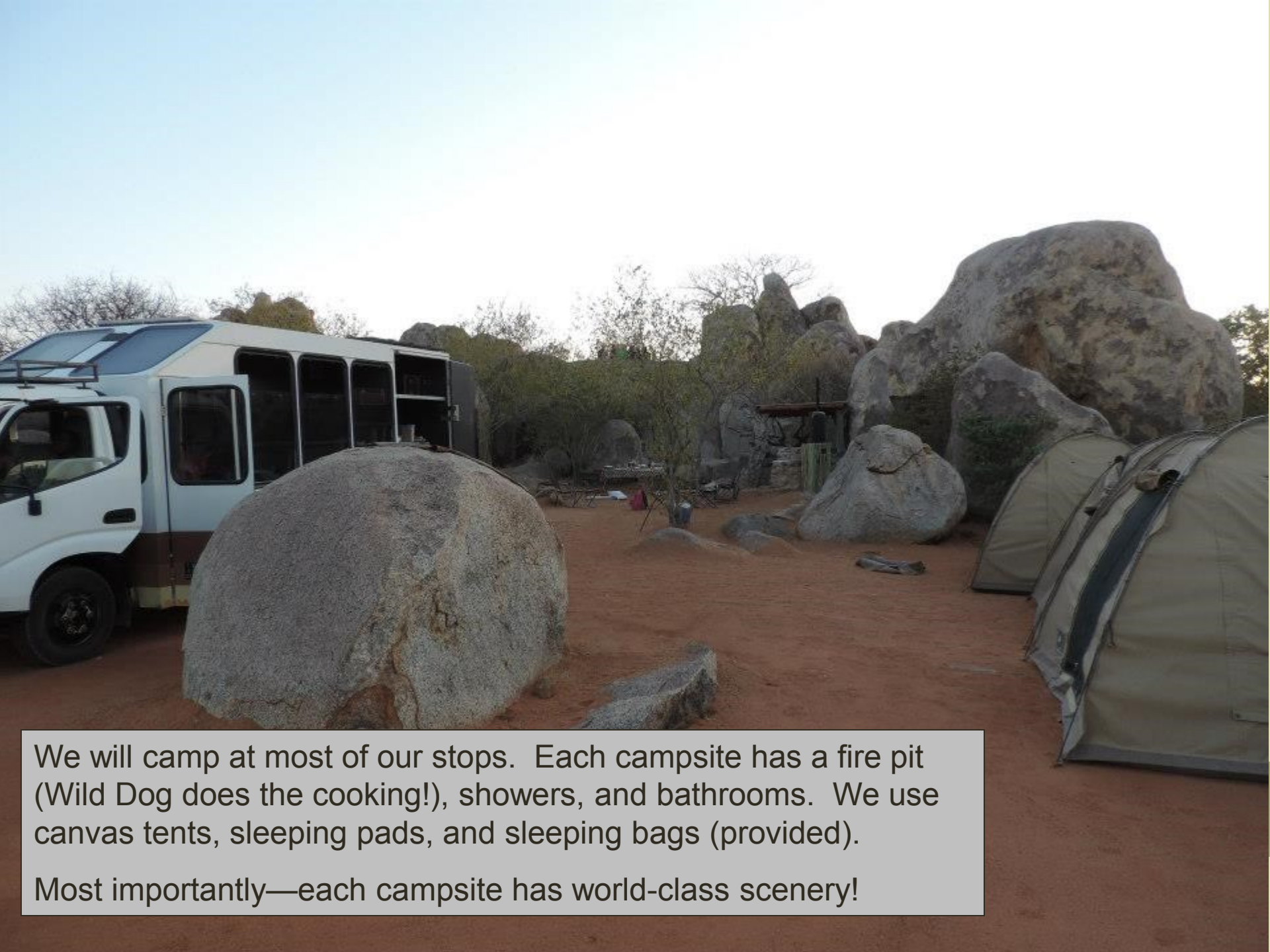


Breakfast Time: 07h00
Continental Breakfast - Includes
Cereal, fruit, yoghurt, juice.
Please help yourself
Café - Hot Chocolate

We will travel with Wild Dog Safaris: they provide driver and helper (2 people)







We will camp at most of our stops. Each campsite has a fire pit (Wild Dog does the cooking!), showers, and bathrooms. We use canvas tents, sleeping pads, and sleeping bags (provided).

Most importantly—each campsite has world-class scenery!

















We will travel!



Etosha National Park!





PLEASE
DO NOT TOUCH





We get to pop the roof on the safari vehicle while in Etosha!













Damaraland: communal areas



Damaraland



Desert
elephants!







We stay at communal group's campsite—built right into the rocks!







Visit to communal group's ecotourism site:
sacred site and rock etchings of historic peoples



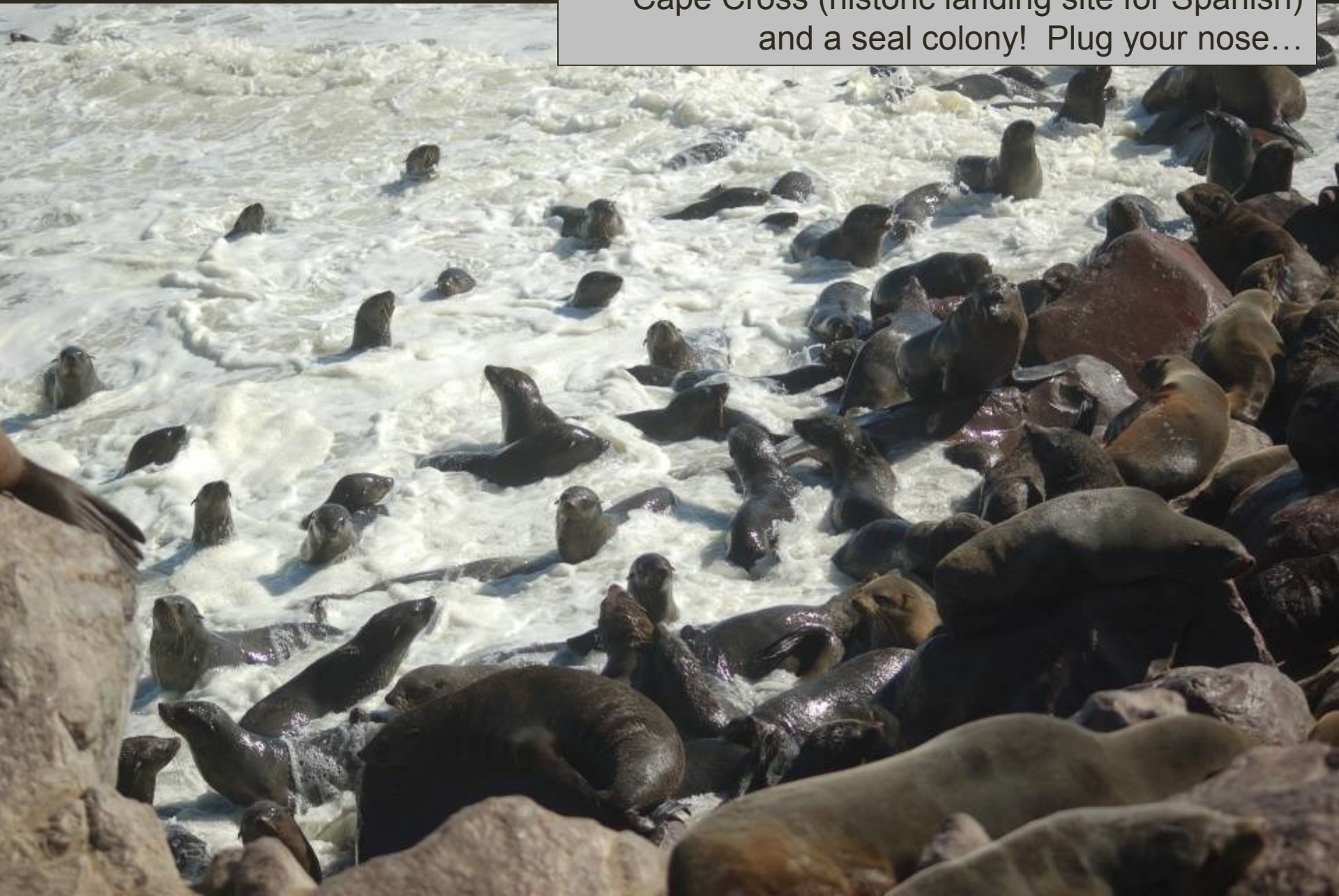




Swakopmund and coast



Cape Cross (historic landing site for Spanish)
and a seal colony! Plug your nose...







Desert biodiversity tour







Free Day/Activity Day: Free, \$50-200 activities (additional to trip fees)

NamibRand Nature Reserve



NamibRand: a high-end tourism site dedicated to funding conservation and preserving the edge of the Namib desert









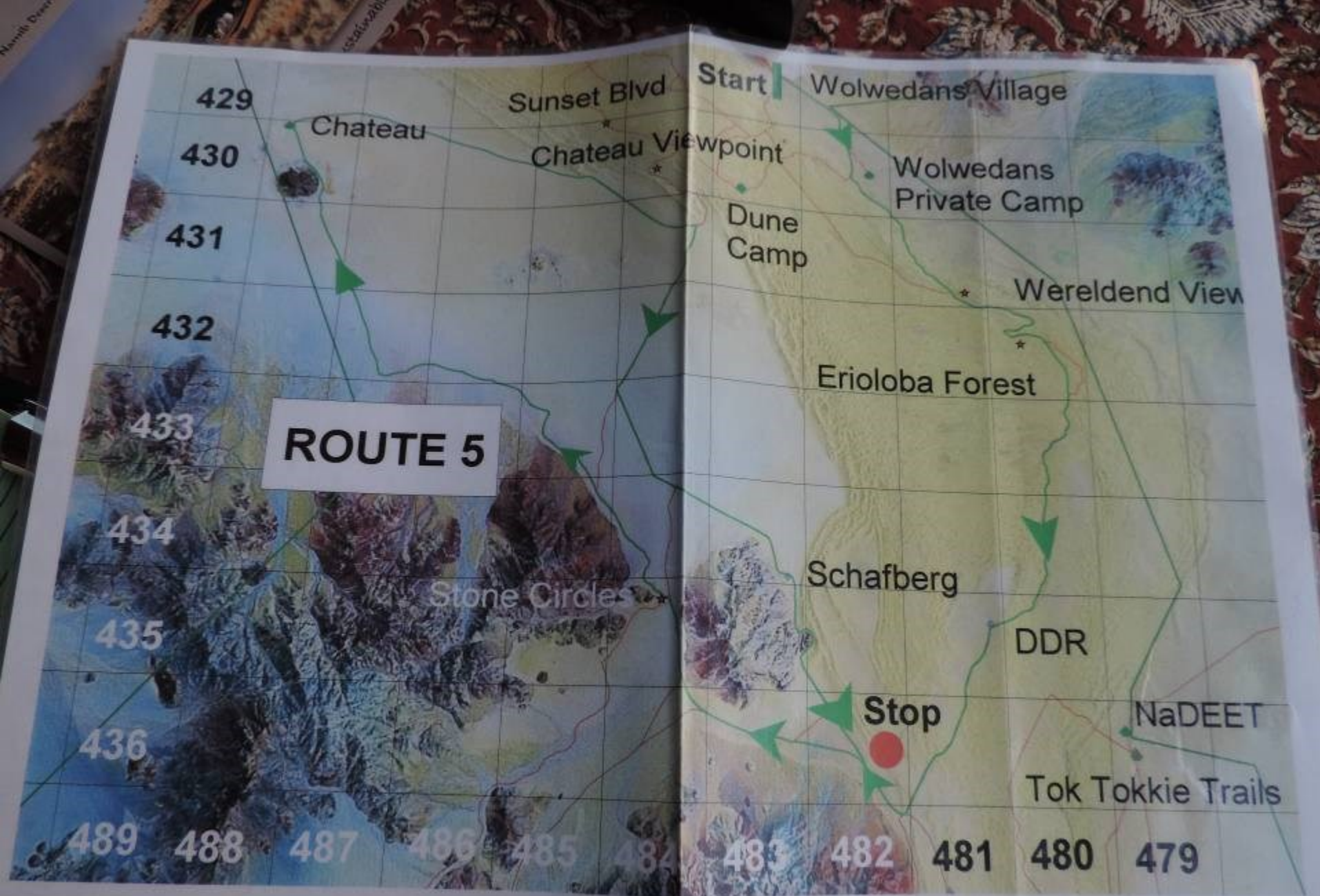
NamibRand: solar cooking at
NaDEET Environmental Education
Center





NamibRand: we will assist with their annual game count, working with their staff and investor group (owners)







NamibRand: bat-eared foxes (use their ears to listen for termites)



Back to Windhoek



Little Professor Preschool





Katutura: “the place you don’t want to be”



Katutura: service project at Home of Good Hope







Goodbye,
Namibia!

Chameleon Backpackers Lodge



Logistic Details

- Program cost (tentative) - \$5,800
- Includes:
 - Airfare and transportation in Namibia
 - Lodging and all meals in Namibia
 - Entrance fees to National Parks
 - Travel insurance
- \$6,800 estimate, inclusive for :
 - Tuition (1-3 credits) and fees
 - Meals while in transit
 - Personal expenses (e.g., souvenirs, snacks, etc.)

Some scholarship funds are available through CASNR, other colleges, and Education Abroad

Internship opportunities

- Spend another month volunteering in Namibia!
 - Cheetah Conservation Fund—separate application on-line and \$2000 fee
 - NaDEET: special UNL offer—free room and board for the month after our trip (we leave you at NamibRand and NaDEET)



Plan of Attack – Fall 2016

- Applications due: November 1, 2016
apply at: myworld.unl.edu
click for info [here](#)
- Notification of Selection: November 7, 2016
- Apply for passport: December 2016
- First Deposit (~\$2,000): December 16, 2016
(covers air fare)



Plan of Attack – Spring 2017

- Late January/early February: initial planning meeting (passports, shots, etc.)
- Service project day—sewing?
- Class meetings weekly after Spring Break
- Balance of trip fee appears on MyRED bill on mid-May and is due mid-June.

[Watch course website for more details!](#)

<http://go.unl.edu/f9mw>